

IceDry® – 1400

Frost free cold stores



Product description

Product description

By installing an IceDry dehumidifier inside the cold store a frost free cold store can now be a reality. An airlock is no longer needed. When IceDry is installed, accumulated ice and frost will gradually evaporate until the store is completely free from ice and frost.

IceDry is the only dehumidifier that has been developed especially for installation inside a cold store. The tough, cold environment demands new and special features created with the sole purpose of ensuring that the unit runs reliably and energy efficient.

Installation is simple. IceDry is positioned close to a wall and needs only a few metres of ducting round it. Reactivation air is taken from the room next to the cold store. As soon as the unit is connected to power and switched on it will start to reduce snow and ice.

An example of the special IceDry features is the thermostat controlled heating fan in the electrical panel. There is also a special reactivation fan in an insulated fan box supplied with a heating cable.

Another special feature of the IceDry series are the G3 filters with aluminium frames and external boxes.

Munters rotor technology

All Munters dehumidifiers are based on the rotor technology specially developed by Munters which provides high moisture-adsorbing capacity.

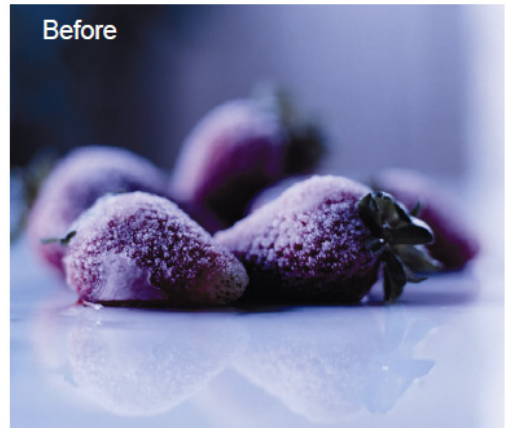
The flexible design and good performance of the rotor mean that there are almost no limits to its areas of use.

IceDry® in Cold Stores

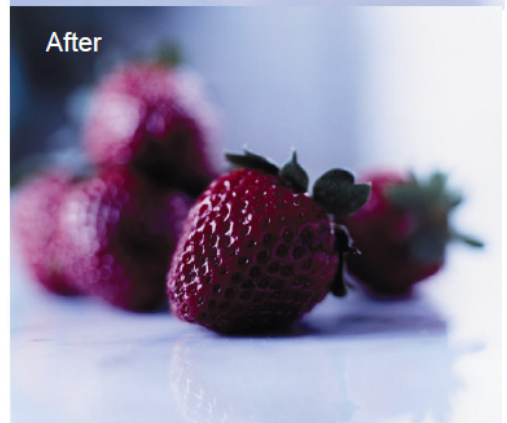
Advantages

- Increased efficiency of evaporators
- Safer storage - no slippery floors
- No need for defrosting
- No ice on products - ensuring quality
- Less mechanical failures - reduced maintenance

Before

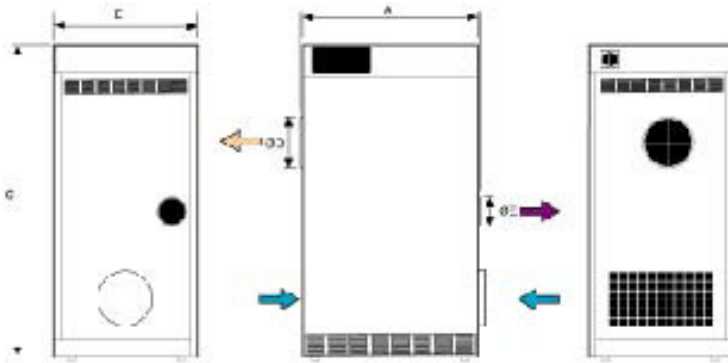


After



IceDry® Model

Diagram measurements are for reference purposes only



	Width (A)	Depth (B)	Height (C)	Diam (D)	Diam (E)	Weight
IceDry 1400	715 mm	590 mm	1352 mm	200 mm	125 mm	143 kg

Technical Specification

Dehumidification capacity (kg water/24hr)	26
Rated process airflow (m ³ /h)	1400
Rated reactivation (m ³ /h)	254
Available static pressure (Pa)	100

Total power, voltage & current (amps/phase)

Total Power (kW)	8.7
380V 3-50 Hz (A)	15.0
400V 3-50 Hz (A)	14.5
415V 3-50 Hz (A)	14.2
Reactivation air heater power (kW)	6.9

Miscellaneous data

Operating temperature (C)	-25 to +40oC
Max noise level (dBA)	80
Air filter	G3
IEC protective class (unit)	IP44
IEC protective class (electrical panel)	IP54

IceDry 1400

